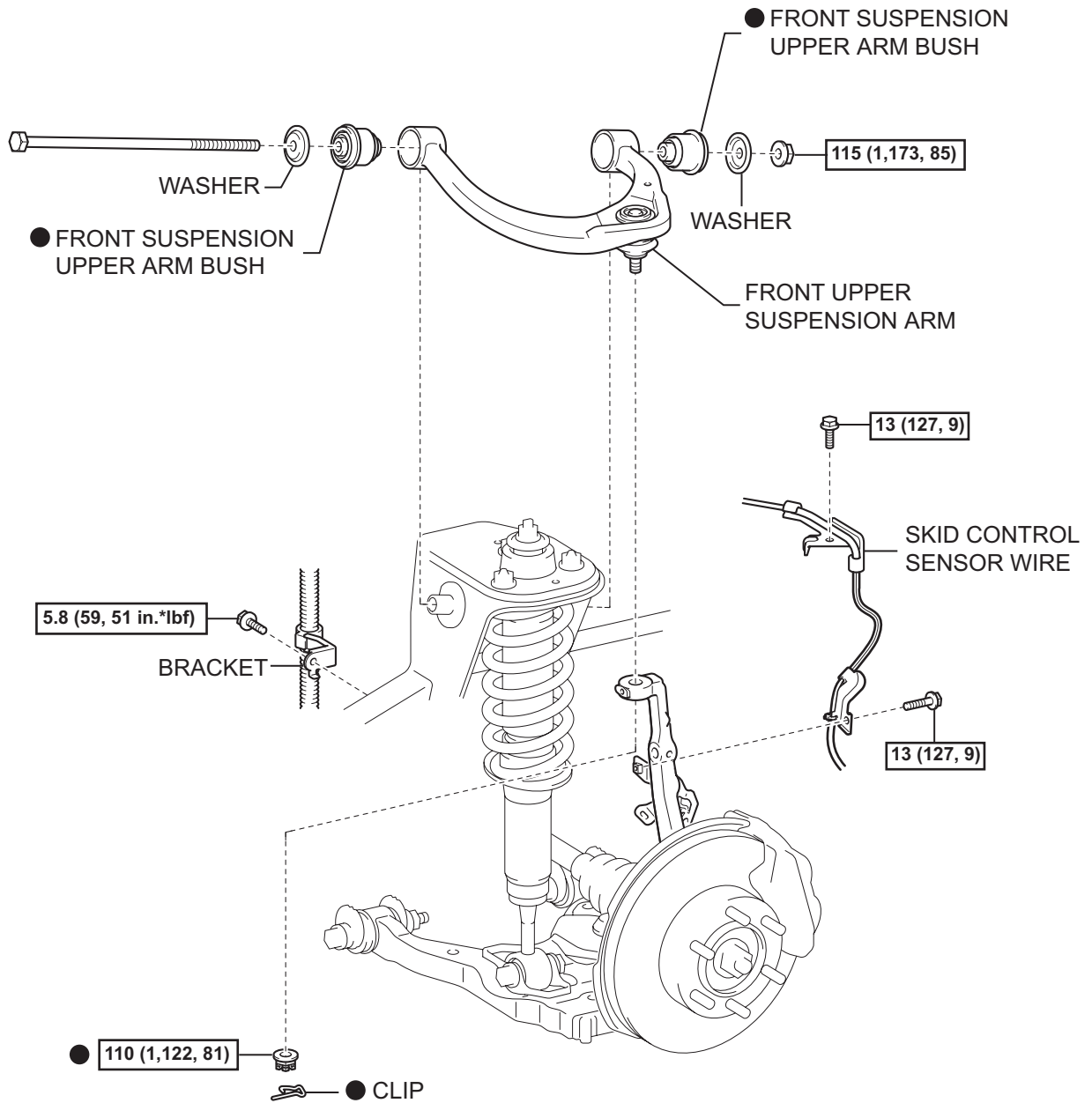


FRONT UPPER SUSPENSION ARM

COMPONENTS

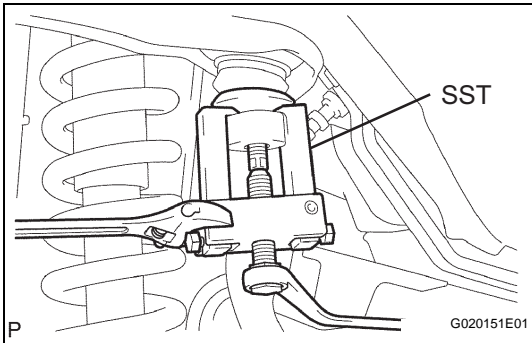
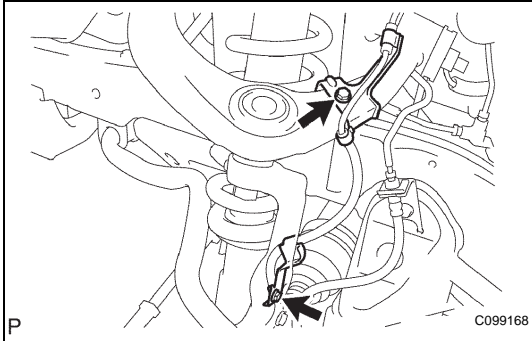


$\boxed{N*m (kgf*cm, ft*lbf)}$: Specified torque

● Non-reusable part

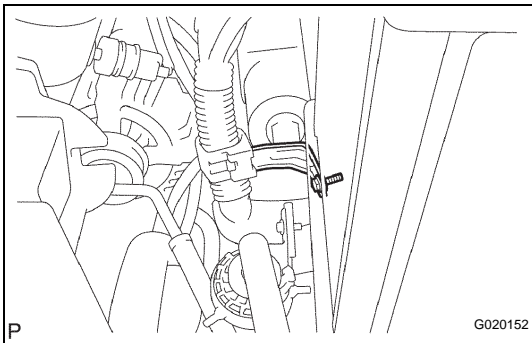
REMOVAL

1. REMOVE FRONT WHEEL
2. INSPECT FRONT UPPER SUSPENSION ARM
 - (a) Check that there is no slack on the ball joint by shaking the upper arm up and down by hand.
3. SEPARATE SKID CONTROL SENSOR WIRE
 - (a) Remove the 2 bolts and separate the skid control sensor wire.
4. REMOVE FRONT UPPER SUSPENSION ARM
 - (a) Support the lower arm with a jack.
 - (b) Remove the clip and nut.

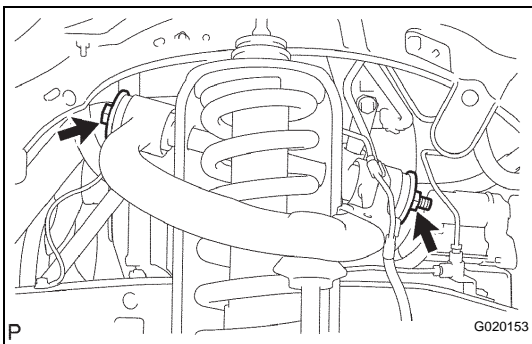


- (c) Using SST, separate the upper ball joint from the steering knuckle.

SST 09628-62011



- (d) Remove the bolt and separate the bracket.



- (e) Remove the bolt, 2 washers and nut.
- (f) Remove the upper arm.